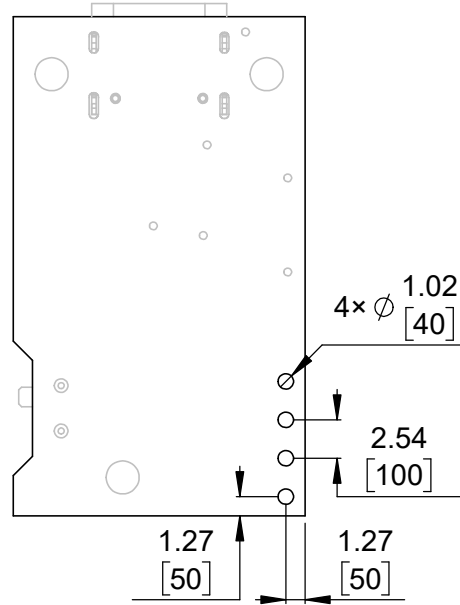
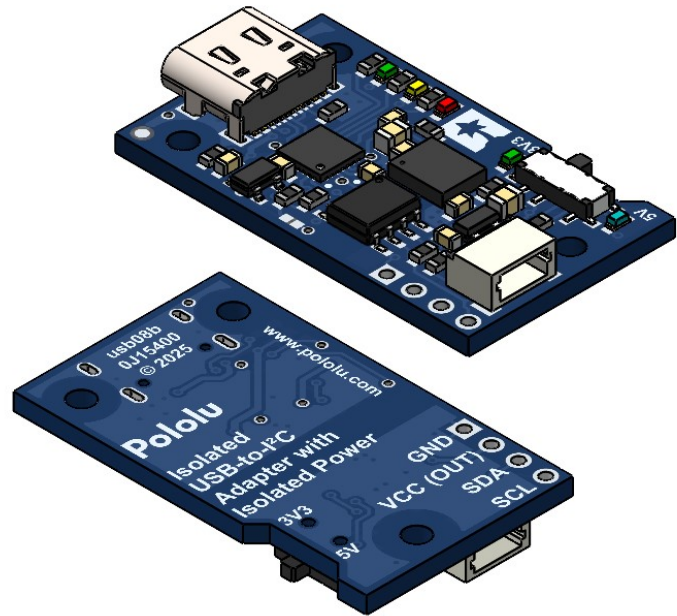


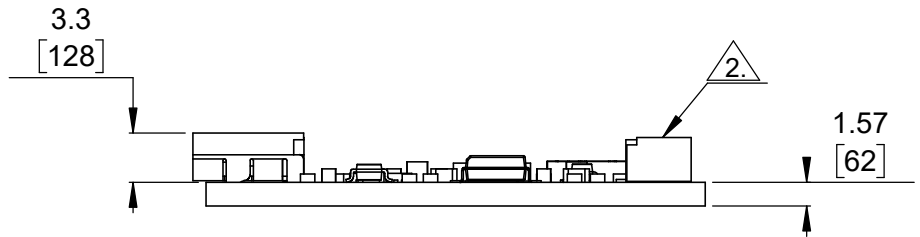
① Board dimensions (top view)
Scale 2:1



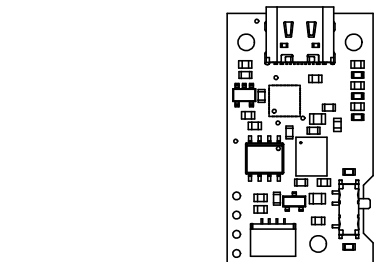
② Connector callouts (bottom view)
Scale 2:1



③ Isometric view
Scale 2:1



④ Profile
Scale 2:1

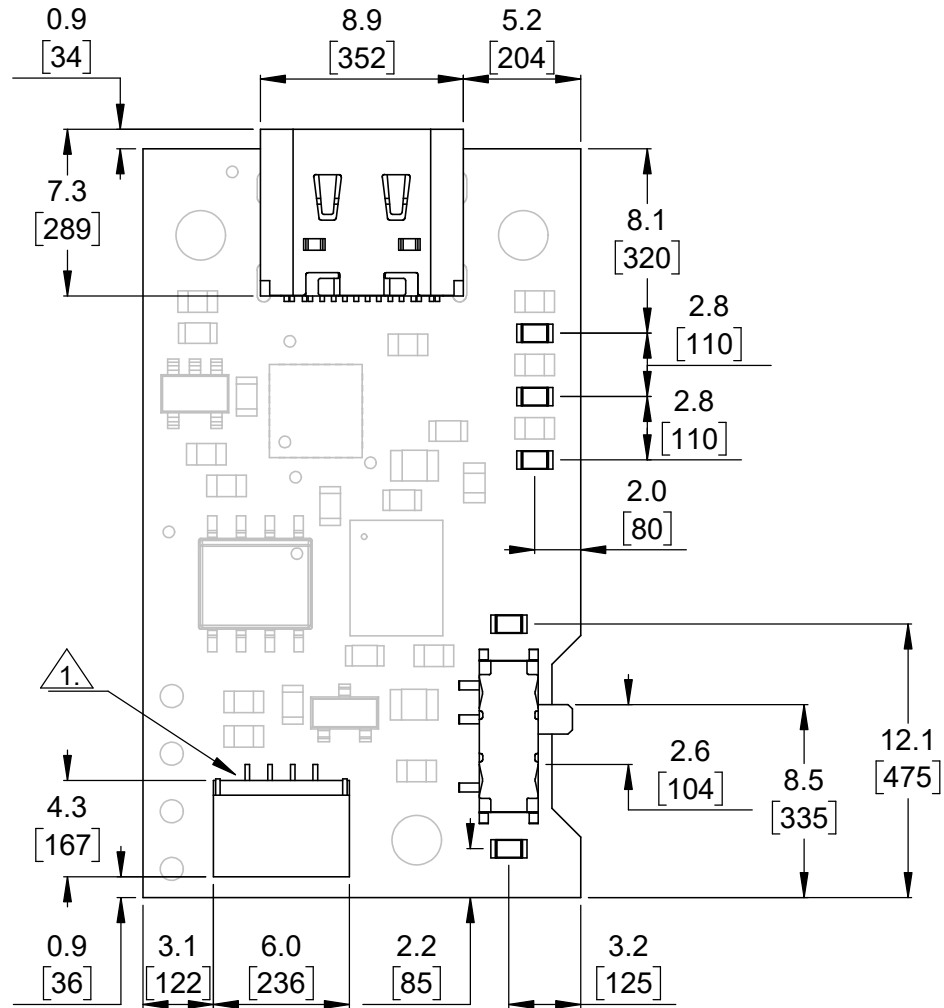


⑤ Actual size
Scale 1:1

- ①. Intended for #2 and M2 screws.
- ②. Side-entry, 4-pin male JST SH-type connector.
- 3. To get the specified scale, select 100% in print settings.
- 4. Drill location tolerance: ± 0.1 [± 5].
- 5. Board edge tolerance: ± 0.3 [± 10].

https://www.pololu.com/product/5397	
Name: Pololu Isolated USB-to-I ² C Adapter with Isolated Power	Item number: 5397
Drawing date: 1 April 2025	Dev code: usb08b
Units: mm [mil]	Material: mixed





① User interface elements
Scale 3:1

①. Side-entry, 4-pin male JST SH-type connector.

- 2. To get the specified scale, select 100% in print settings.
- 3. Drill location tolerance: ± 0.1 [± 5].
- 4. Board edge tolerance: ± 0.3 [± 10].

<https://www.pololu.com/product/5397>

Name: Pololu Isolated USB-to-I ² C Adapter with Isolated Power		Item number: 5397
Drawing date: 1 April 2025	Dev code: usb08b	
Units: mm [mil]	Material: mixed	

