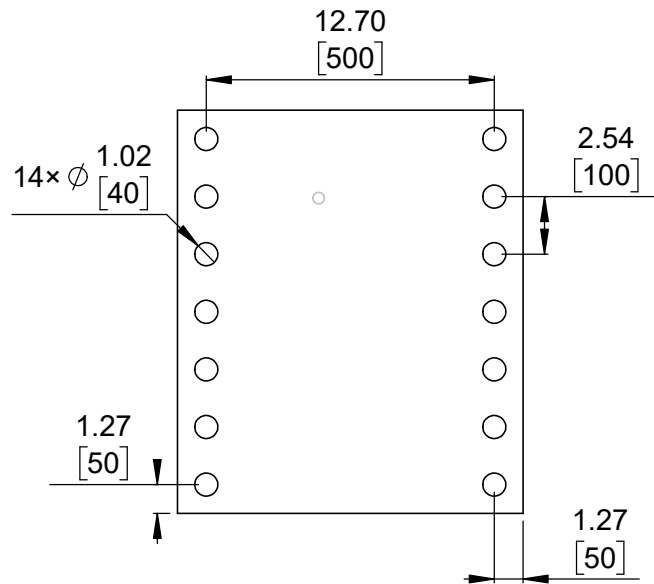
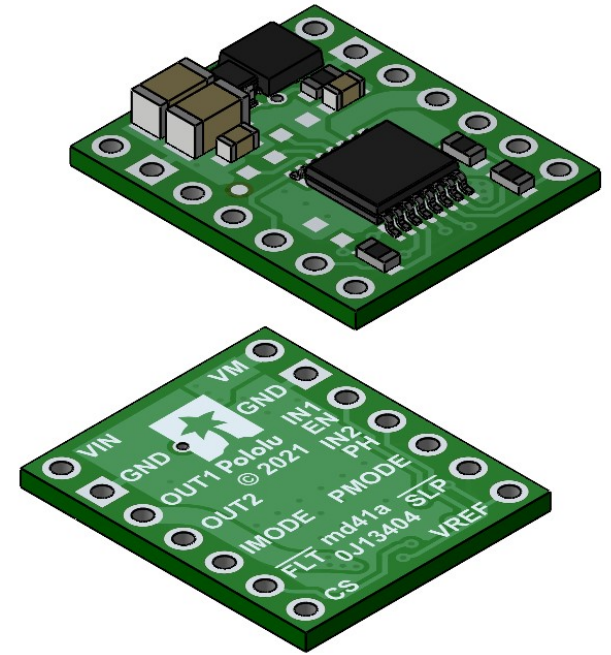


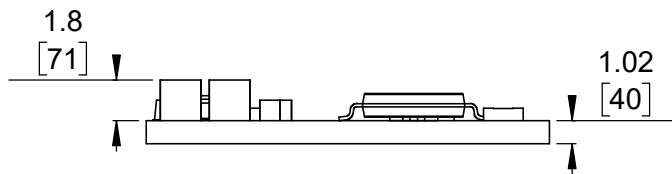
1 Board dimensions (top view)
Scale 3:1



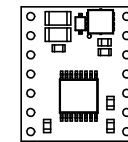
2 Connector callouts (bottom view)
Scale 3:1



3 Isometric view
Scale 3:1




4 Profile
Scale 3:1



5 Actual size
Scale 1:1

- To get the specified scale, select 100% in print settings.
- Drill location tolerance: ± 0.1 [± 5].
- Board edge tolerance: ± 0.3 [± 10].

<https://www.pololu.com/product/4971>

Name: TB67H453FNG Single Brushed DC Motor Driver Carrier		Item number: 4971
Drawing date: 5 March 2025	Dev code: md41a	 © 2025 Pololu Corporation
Units: mm [mil]	Material: mixed	