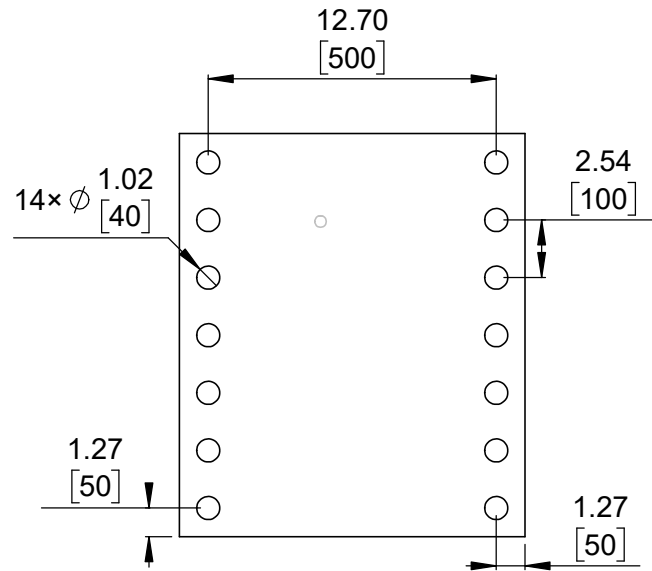
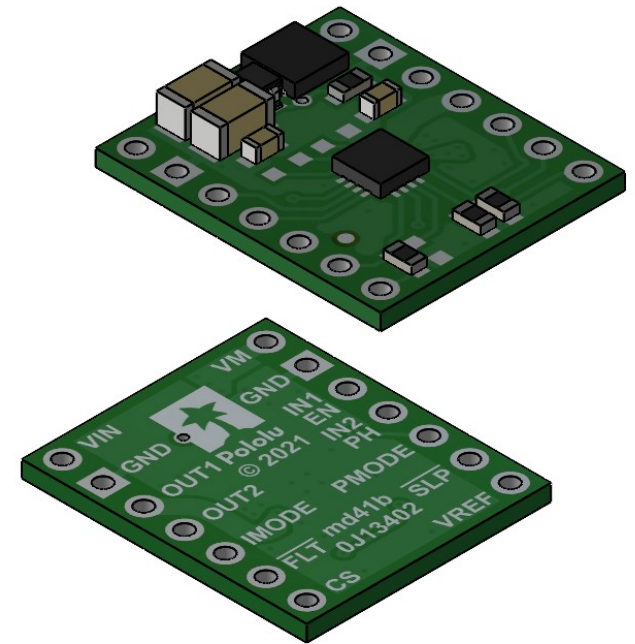


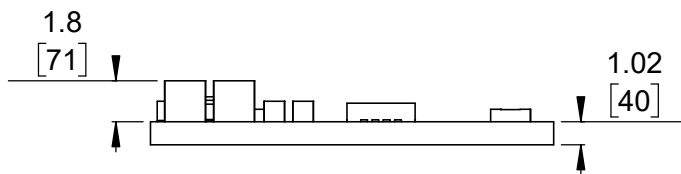
① Board dimensions (top view)
Scale 3:1



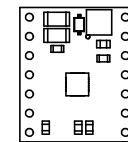
② Connector callouts (bottom view)
Scale 3:1



③ Isometric view
Scale 3:1



④ Profile
Scale 3:1



⑤ Actual size
Scale 1:1

1. To get the specified scale, select 100% in print settings.
2. Drill location tolerance: ± 0.1 [± 5].
3. Board edge tolerance: ± 0.3 [± 10].

https://www.pololu.com/product/4972	
Name: TB67H453FTG (QFN) Single Brushed DC Motor Driver Carrier	Item number: 4972
Drawing date: 27 February 2025	Dev code: md41b
Units: mm [mil]	Material: mixed

