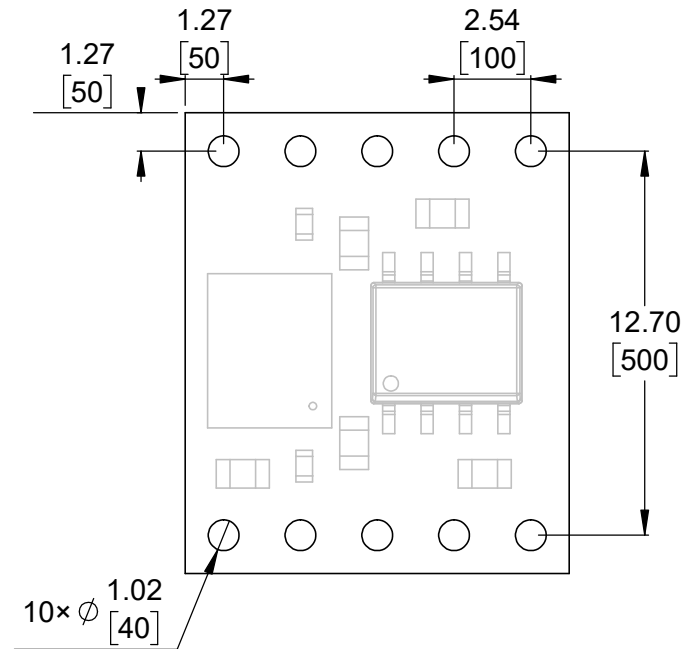
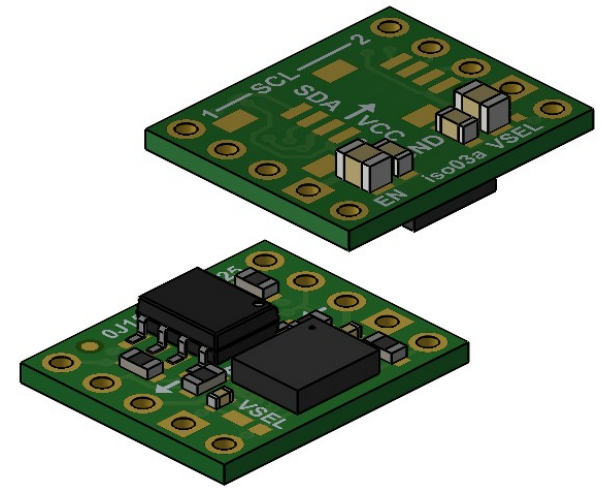


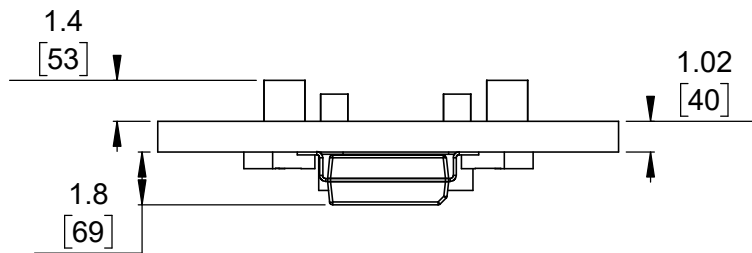
1 Board dimensions (top view)
Scale 4:1



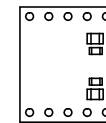
2 Connector callouts (bottom view)
Scale 4:1



3 Isometric view
Scale 3:1




4 Profile
Scale 4:1

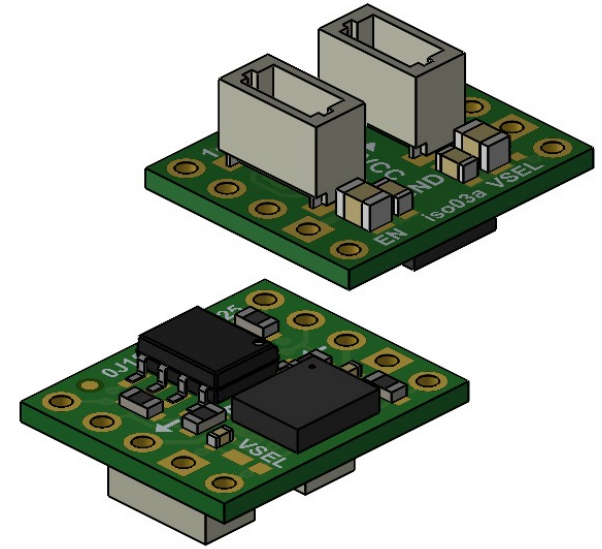
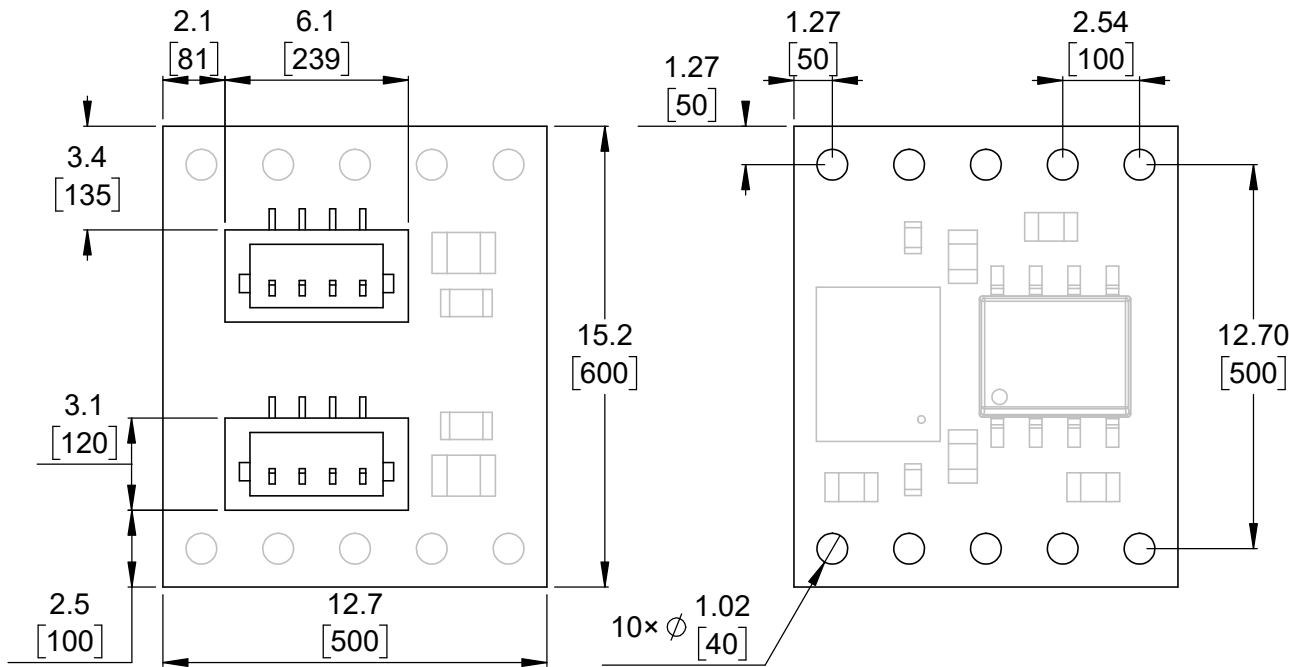


5 Actual size
Scale 1:1

- To get the specified scale, select 100% in print settings.
- Drill location tolerance: ± 0.1 [± 5].
- Board edge tolerance: ± 0.3 [± 10].

<https://www.pololu.com/product/5392>

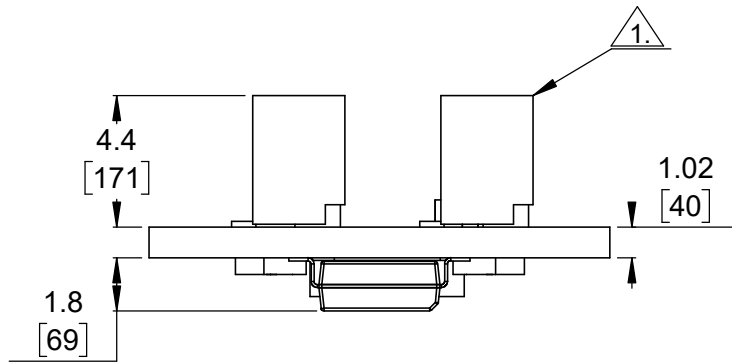
Name: Pololu I ² C Isolator with Isolated Power, ISO1640, MIE1W0505BGLVH, 5V/3.3V, 200mA		Item number: 5392
Drawing date: 12 February 2025	Dev code: iso03a	 © 2025 Pololu Corporation
Units: mm [mil]	Material: mixed	



① Board dimensions (top view)
Scale 4:1

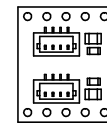
② Connector callouts (bottom view)
Scale 4:1

③ Isometric view
Scale 3:1



④ Profile
Scale 4:1


⑤ Actual size
Scale 1:1



1. Top-entry, 6-pin male JST SH-type connectors.

- 2. To get the specified scale, select 100% in print settings.
- 3. Drill location tolerance: ± 0.1 [± 5].
- 4. Board edge tolerance: ± 0.3 [± 10].

<https://www.pololu.com/product/5393>

Name: Pololu I ² C Isolator with Isolated Power and Connectors, ISO1640, MIE1W0505BGLVH, 5V/3.3V, 200mA		Item number: 5393
Drawing date: 12 February 2025	Dev code: iso03a	 © 2025 Pololu Corporation
Units: mm [mil]	Material: mixed	