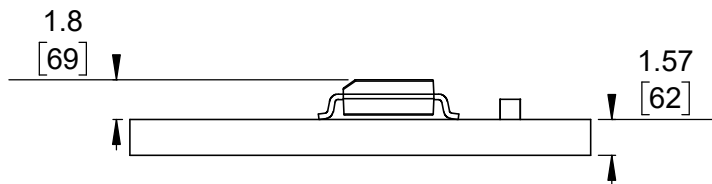
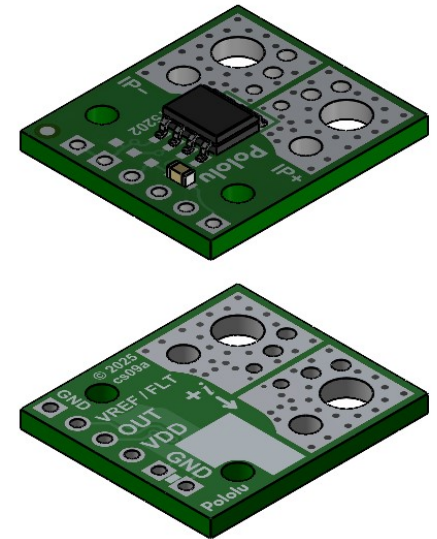


① Board dimensions (top view)
Scale 3:1

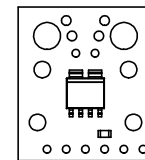
② Connector callouts (bottom view)
Scale 3:1

③ Isometric view
Scale 2:1



④ Profile
Scale 3:1

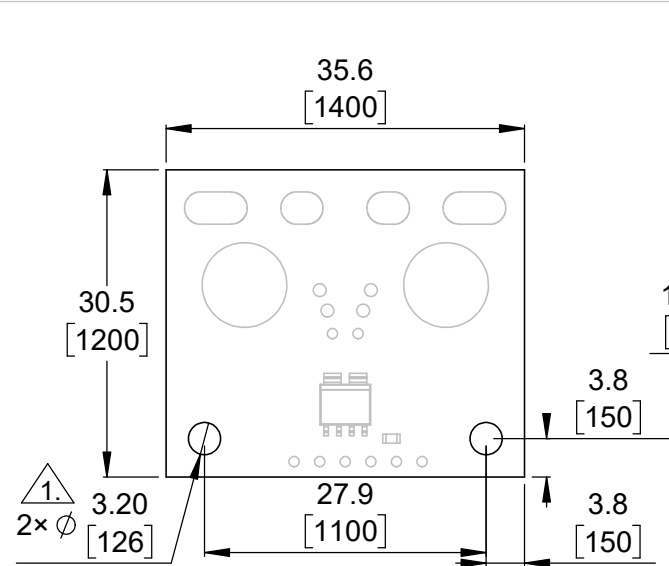
⑤ Actual size
Scale 1:1



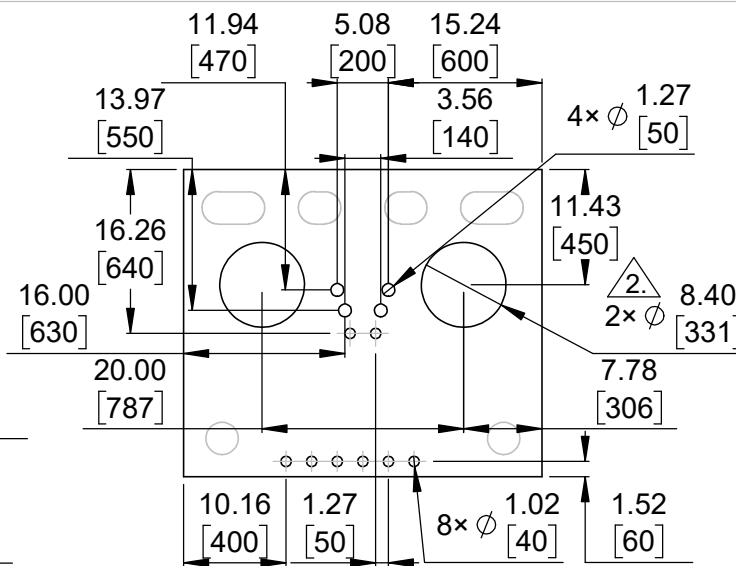
- ①. Intended for #2 and M2 screws.
- ②. Intended for #6 and M3.5 screws and 10 AWG or thinner wire.
- ③. Intended for #2 and M2 screws and 14 AWG or thinner wire.
- 4. Grid lines indicate 2.54 mm [100 mil] spacing.
- 5. To get the specified scale, select 100% in print settings.
- 6. Drill location tolerance: ± 0.1 [± 5].
- 7. Board edge tolerance: ± 0.3 [± 10].

https://www.pololu.com/category/332	
Name: ACS37030 Current Sensor Compact Carriers	Item number: 5230-5232
Drawing date: 7 January 2025	Dev code: cs09a
Units: mm [mil]	Material: mixed

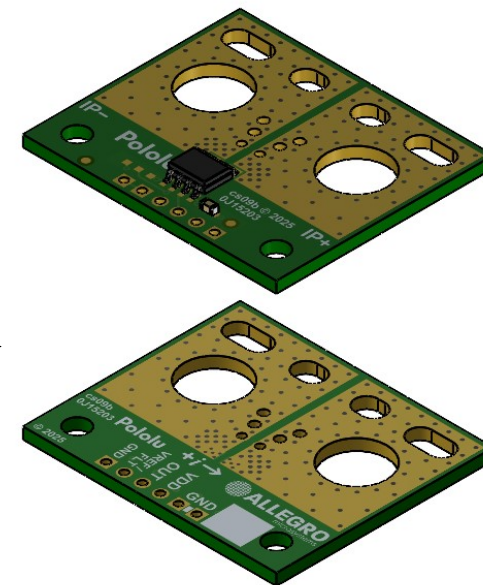




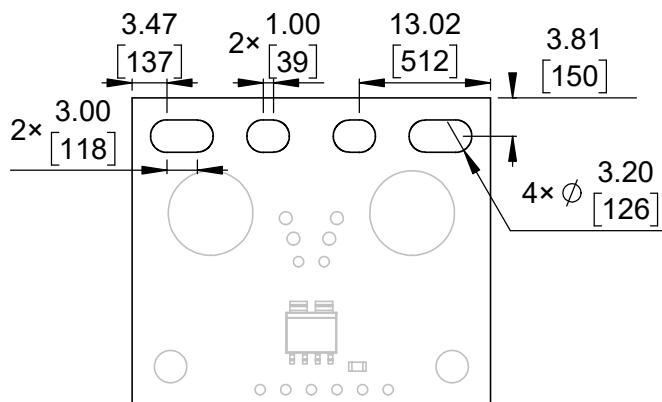
① Board dimensions (top view)
Scale 4:3



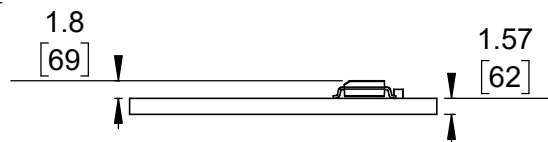
② Connector callouts (bottom view)
Scale 4:3



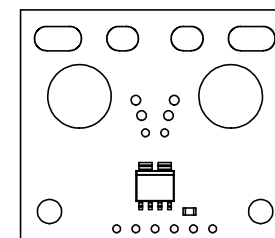
③ Isometric view
Scale 4:3



④ Connector callouts (slots) ③
Scale 4:3



⑤ Profile
Scale 4:3



⑥ Actual size
Scale 1:1

- ①. Intended for #4 and M3 screws.
- ②. Intended for 5/16" and M8 screws and 2 AWG or thinner wire.
- ③. Slots intended for 7.5 mm to 9.5 mm pitch connectors.
- 4. Grid lines indicate 2.54 mm [100 mil] spacing.
- 5. To get the specified scale, select 100% in print settings.
- 6. Drill location tolerance: ±0.1 [±5].
- 7. Board edge tolerance: ±0.3 [±10].

https://www.pololu.com/category/332	
Name: ACS37030 Current Sensor Large Carriers	Item number: 5233-5235
Drawing date: 7 January 2025	Dev code: cs09b
Units: mm [mil]	Material: mixed

