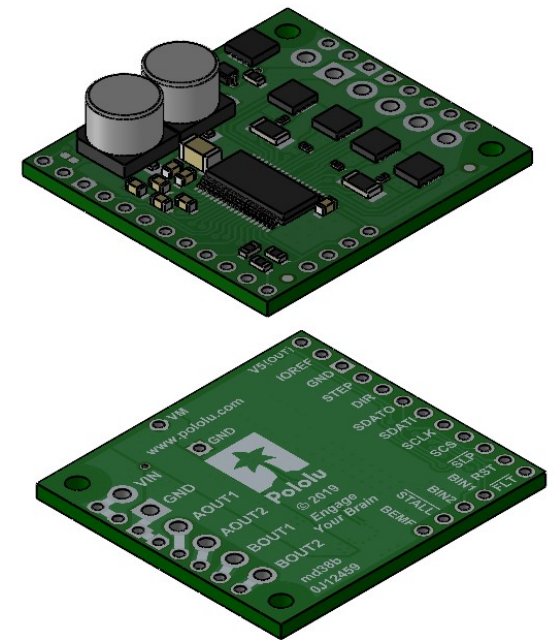
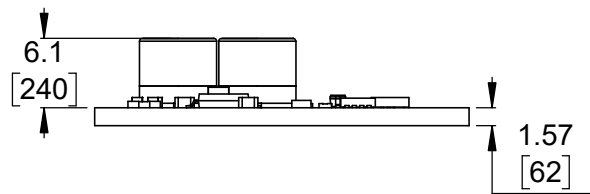


① Board dimensions (top view)  
Scale 3:2

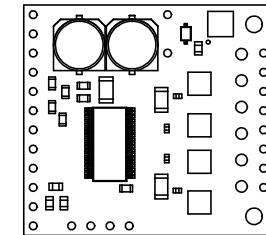
② Connector callouts (bottom view)  
Scale 3:2



③ Isometric view  
Scale 3:2




④ Profile  
Scale 3:2

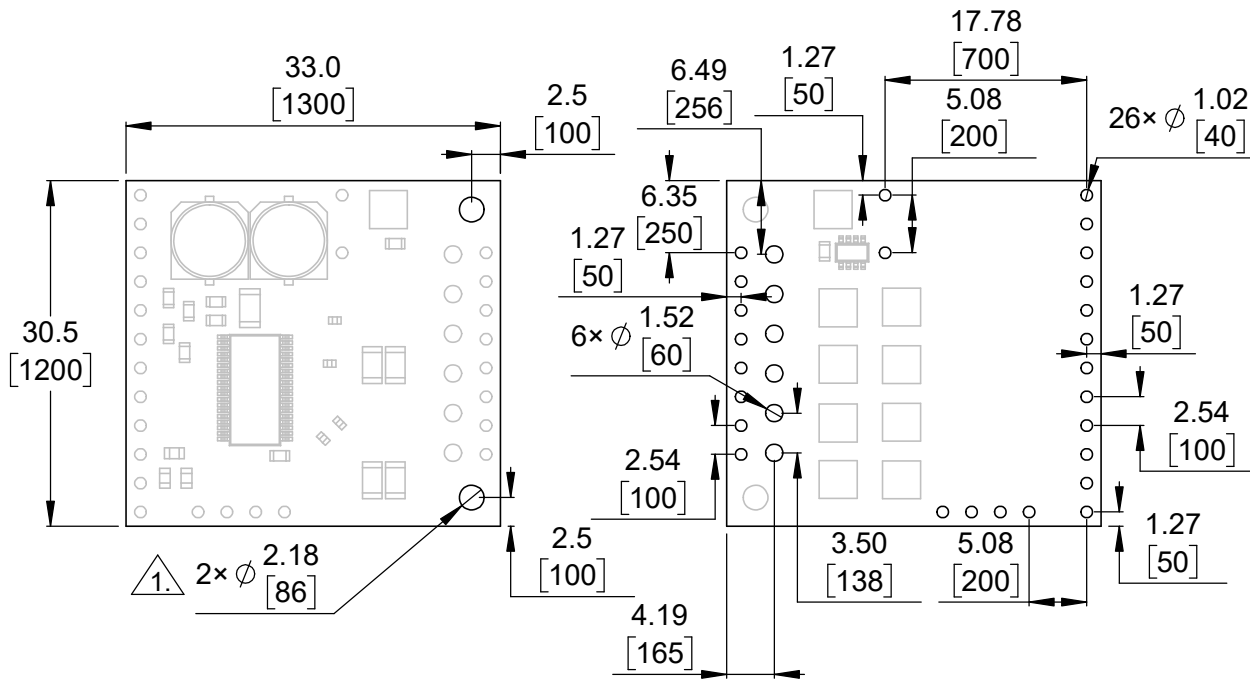


⑤ Actual size  
Scale 1:1

- ①. Intended for #2 and M2 screws.
- ②. To get the specified scale, select 100% in print settings.
- ③. Drill location tolerance:  $\pm 0.1$  [ $\pm 5$ ].
- ④. Board edge tolerance:  $\pm 0.3$  [ $\pm 10$ ].

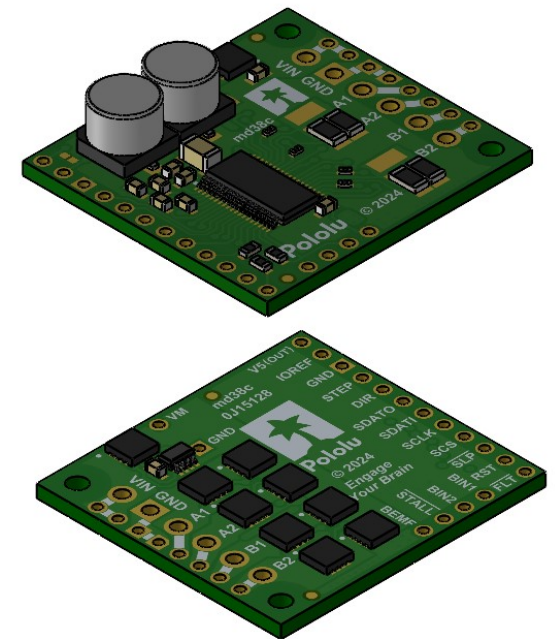
<https://www.pololu.com/product/3730>

Name: Pololu High-Power Stepper Motor Driver 36v4		Item number: 3730
Drawing date: 6 December 2024	Dev code: md38b	 © 2024 Pololu Corporation
Units: mm [mil]	Material: mixed	

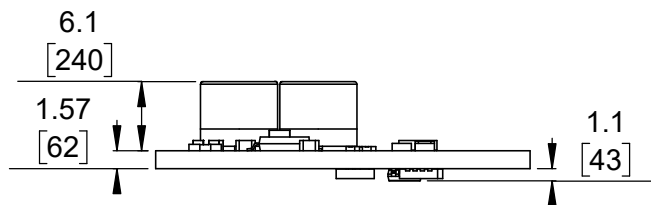


① Board dimensions (top view)  
Scale 3:2

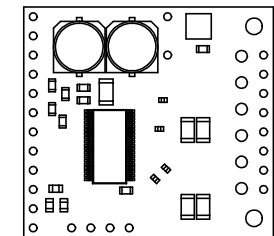
② Connector callouts (bottom view)  
Scale 3:2



③ Isometric view  
Scale 3:2




④ Profile  
Scale 3:2



⑤ Actual size  
Scale 1:1

1. Intended for #2 and M2 screws.
2. To get the specified scale, select 100% in print settings.
3. Drill location tolerance:  $\pm 0.1$  [ $\pm 5$ ].
4. Board edge tolerance:  $\pm 0.3$  [ $\pm 10$ ].

<https://www.pololu.com/product/3731>

Name: Pololu High-Power Stepper Motor Driver 36v8		Item number: 3731
Drawing date: 6 December 2024	Dev code: md38c	 © 2024 Pololu Corporation
Units: mm [mil]	Material: mixed	