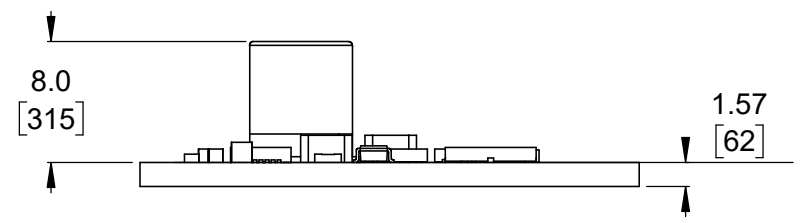


① Board dimensions (top view)
Scale 2:1

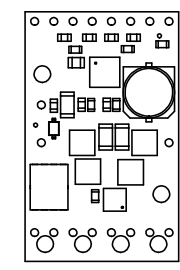
② Connector callouts (bottom view)
Scale 2:1

③ Isometric view
Scale 2:1



④ Profile
Scale 2:1

⑤ Actual size
Scale 2:1



- 1. Intended for #2 and M2 screws.
- 2. To get the specified scale, select 100% in print settings.
- 3. Drill location tolerance: ± 0.1 [± 5].
- 4. Board edge tolerance: ± 0.3 [± 10].

https://www.pololu.com/product/2993	
Name: Pololu H2 High-Power Motor Driver 36v11 CS	Item number: 2993
Drawing date: 5 August 2024	Dev code: md45a
Units: mm [mil]	Material: mixed

