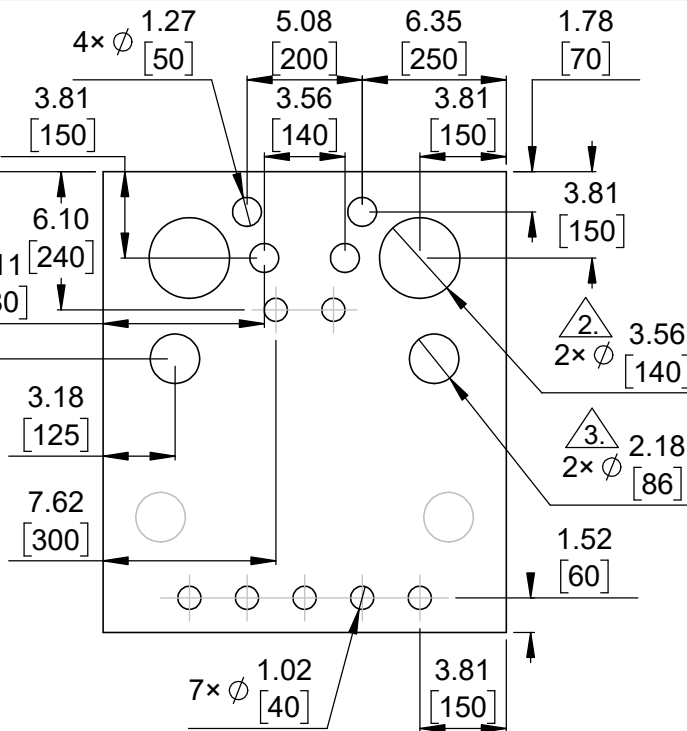
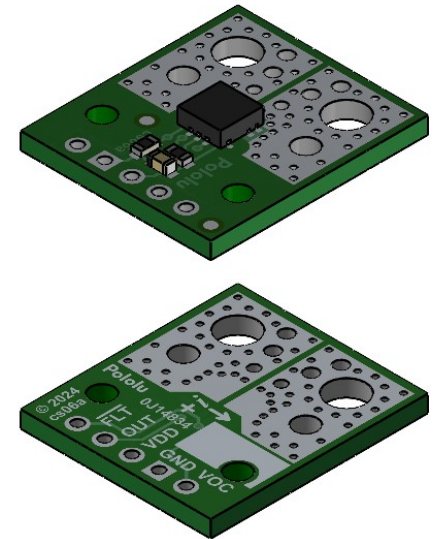


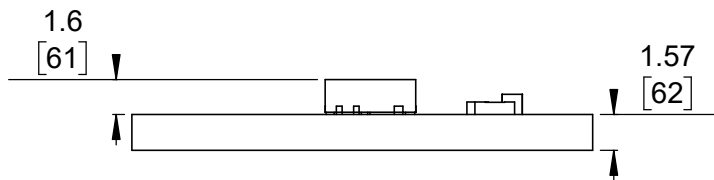
① Board dimensions (top view)
Scale 3:1



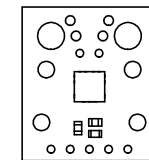
② Connector callouts (bottom view)
Scale 3:1



③ Isometric view
Scale 2:1




④ Profile
Scale 3:1

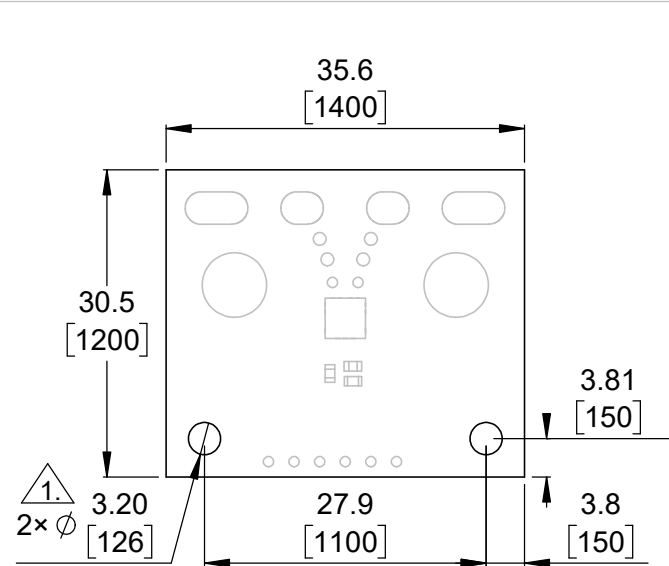


⑤ Actual size
Scale 1:1

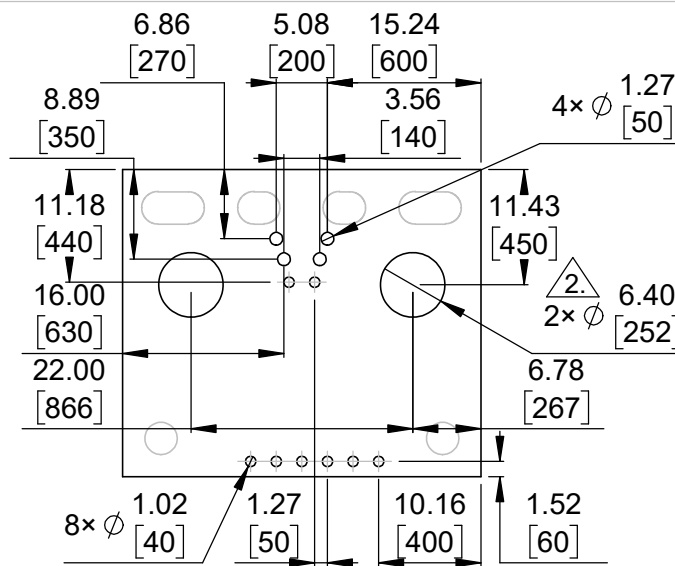
- ①. Intended for #2 and M2 screws.
- ②. Intended for #6 and M3.5 screws and 10 AWG or thinner wire.
- ③. Intended for #2 and M2 screws and 14 AWG or thinner wire.
- 4. Grid lines indicate 2.54 mm [100 mil] spacing.
- 5. To get the specified scale, select 100% in print settings.
- 6. Drill location tolerance: ± 0.1 [± 5].
- 7. Board edge tolerance: ± 0.3 [± 10].

<https://www.pololu.com/category/319>

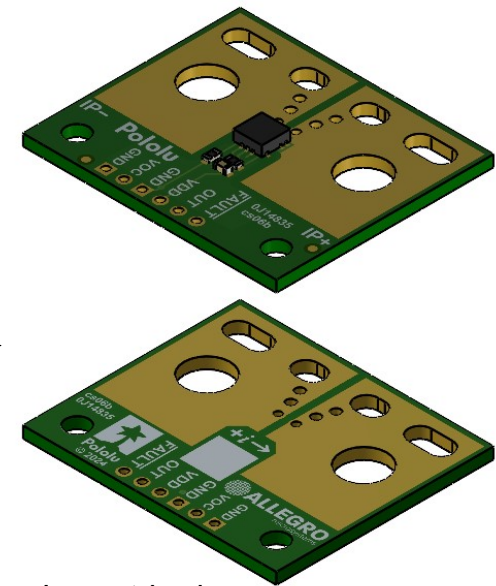
Name: ACS37220 Current Sensor Compact Carriers		Item number: 5290-5294
Drawing date: 11 June 2024	Dev code: cs06a	 © 2024 Pololu Corporation
Units: mm [mil]	Material: mixed	



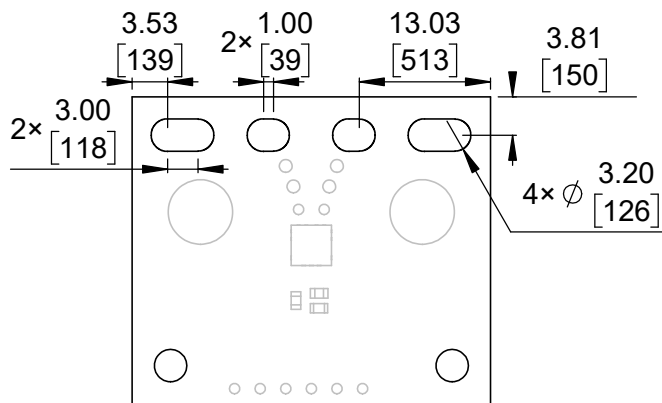
① Board dimensions (top view)
Scale 4:3



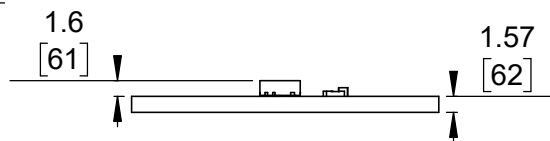
② Connector callouts (bottom view)
Scale 4:3



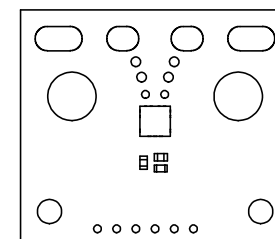
③ Isometric view
Scale 4:3



④ Connector callouts (slots) ③
Scale 4:3




⑤ Profile
Scale 4:3



⑥ Actual size
Scale 1:1

- ①. Intended for #4 and M3 screws.
- ②. Intended for #12 and M6 screws and 4 AWG or thinner wire.
- ③. Slots intended for 7.5 mm to 9.5 mm pitch connectors.
- 4. Grid lines indicate 2.54 mm [100 mil] spacing.
- 5. To get the specified scale, select 100% in print settings.
- 6. Drill location tolerance: ± 0.1 [± 5].
- 7. Board edge tolerance: ± 0.3 [± 10].

<https://www.pololu.com/category/320>

Name: ACS37220 Current Sensor Large Carriers		Item number: 5295-5299
Drawing date: 11 June 2024	Dev code: cs06b	 © 2024 Pololu Corporation
Units: mm [mil]	Material: mixed	