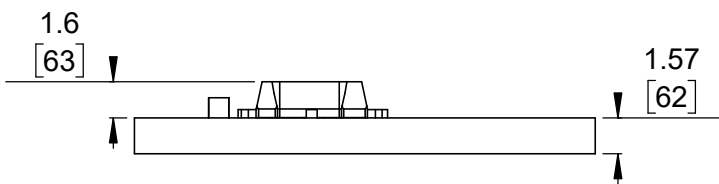
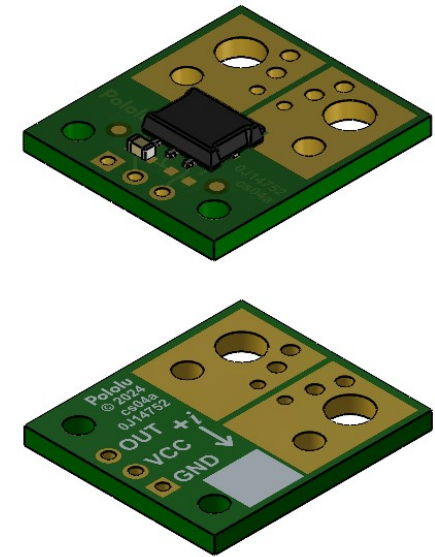


① Board dimensions (top view)  
Scale 3:1

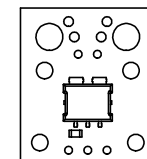
② Connector callouts (bottom view)  
Scale 3:1

③ Isometric view  
Scale 2:1



④ Profile  
Scale 3:1

⑤ Actual size  
Scale 1:1

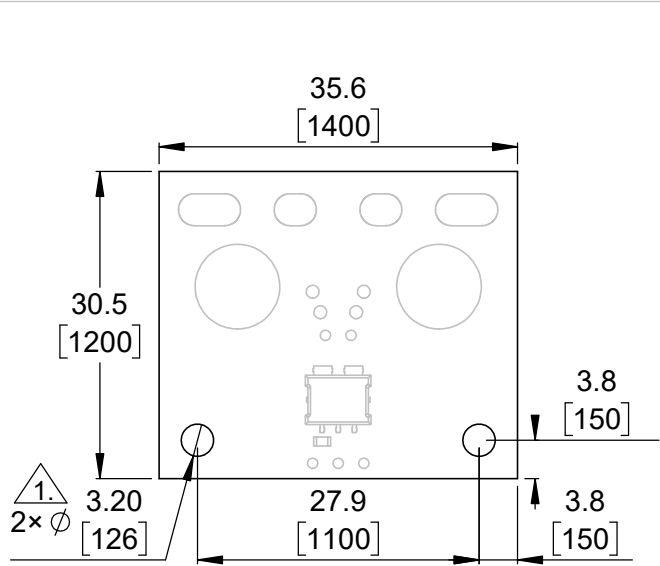


- ①. Intended for #2 and M2 screws.
- ②. Intended for #6 screws and 8 AWG or thinner wire.
- ③. Intended for #2 and M2 screws and 12 AWG or thinner wire.
- 4. Grid lines indicate 2.54 mm [100 mil] spacing.
- 5. To get the specified scale, select 100% in print settings.
- 6. Drill location tolerance:  $\pm 0.1$  [ $\pm 5$ ].
- 7. Board edge tolerance:  $\pm 0.3$  [ $\pm 10$ ].

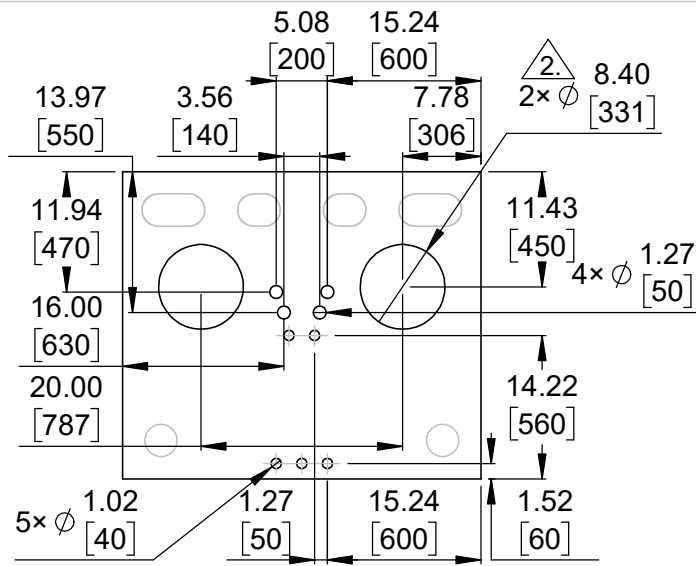
<https://www.pololu.com/category/316>

Name: ACS72981xLR Current Sensor Compact Carriers		Item number: 5250-5264
Drawing date: 5 June 2024	Dev code: cs04a	
Units: mm [mil]	Material: mixed	

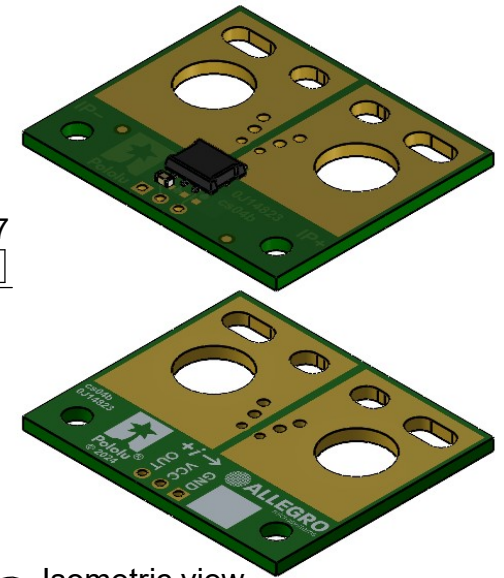




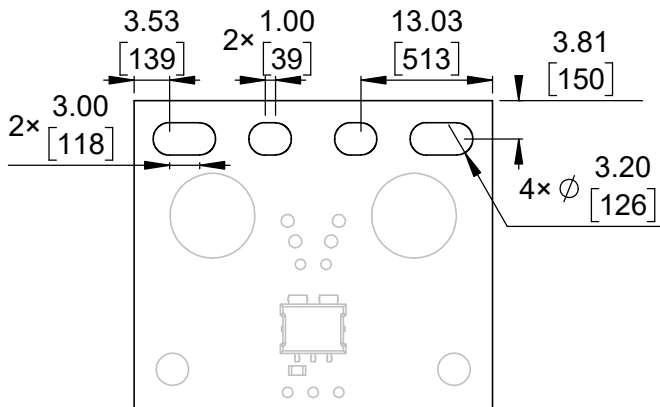
① Board dimensions (top view)  
Scale 4:3



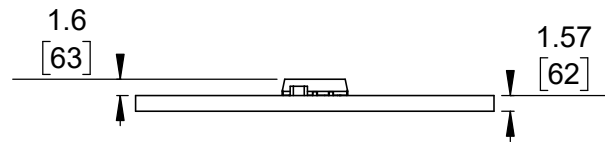
② Connector callouts (bottom view)  
Scale 4:3



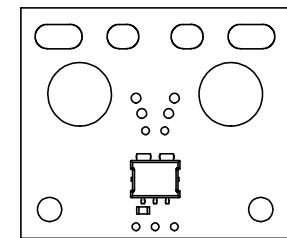
③ Isometric view  
Scale 4:3



④ Connector callouts (slots) ③  
Scale 4:3




⑤ Profile  
Scale 4:3



⑥ Actual size  
Scale 1:1

- ①. Intended for #4 and M3 screws.
- ②. Intended for 5/16 in and M8 screws and 2 AWG or thinner wire.
- ③. Slots intended for 7.5-9.5 mm pitch connectors.
- 4. Grid lines indicate 2.54 mm [100 mil] spacing.
- 5. To get the specified scale, select 100% in print settings.
- 6. Drill location tolerance:  $\pm 0.1$  [ $\pm 5$ ].
- 7. Board edge tolerance:  $\pm 0.3$  [ $\pm 10$ ].

<https://www.pololu.com/category/317>

Name: ACS72981xLR Current Sensor Large Carriers		Item number: 5270-5284
Drawing date: 5 June 2024	Dev code: cs04b	 © 2024 Pololu Corporation
Units: mm [mil]	Material: mixed	