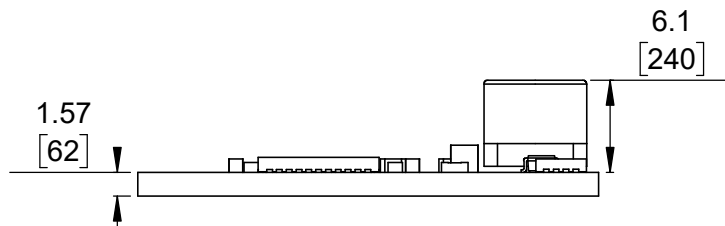


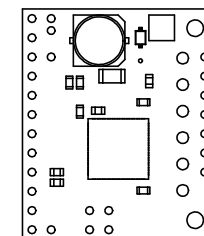
3 Isometric view Scale 2:1

1 Board dimensions (top view) Scale 2:1

2 Connector callouts (bottom view) Scale 2:1




4 Profile Scale 2:1



5 Actual size Scale 1:1

- 1. Intended for #2 screws.
- 2. To get the specified scale, select 100% in print settings.
- 3. Drill location tolerance: ± 0.1 [± 5].
- 4. Board edge tolerance: ± 0.3 [± 10].

<https://www.pololu.com/product/2999>

Name: TB67H420FTG Dual/Single Motor Driver Carrier		Item number: 2999
Drawing date: 10 May 2018	Dev code: md35a	 © 2018 Pololu Corporation
Units: mm [mil]	Material: mixed	