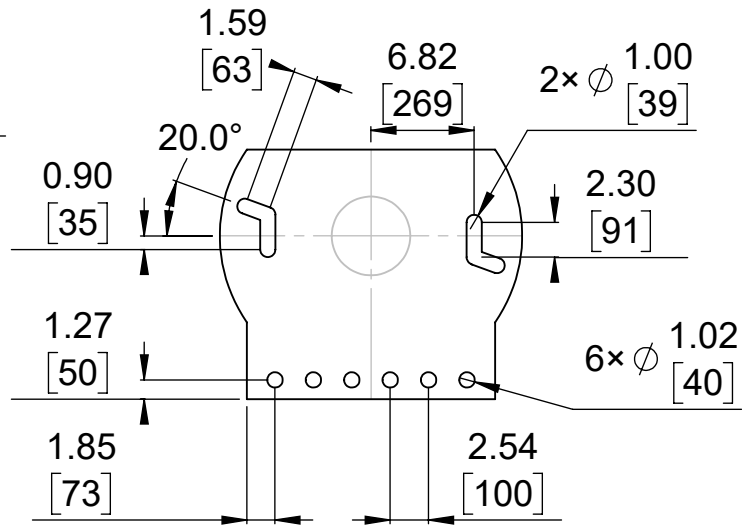
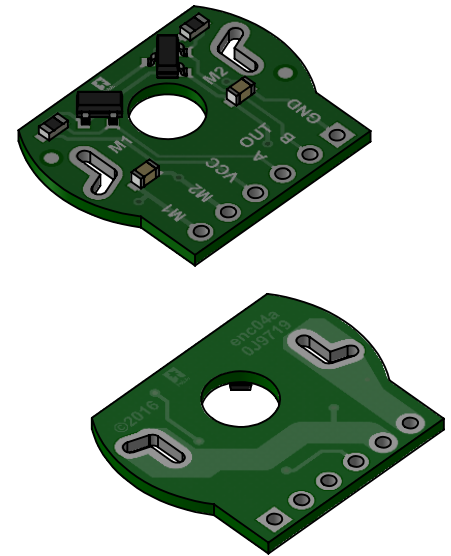


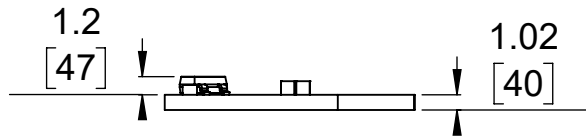
① Board dimensions (top view)
Scale 2:1



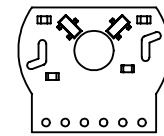
② Connector callouts (bottom view)
Scale 2:1



③ Isometric view
Scale 2:1



④ Profile
Scale 2:1



⑤ Actual size
Scale 1:1

1. To get the specified scale, select 100% in print settings.
2. Drill location tolerance: ± 0.1 [± 5].
3. Board edge tolerance: ± 0.3 [± 10].

<https://www.pololu.com/product/3499>

Name:
Magnetic Encoder Pair Kit for 20D mm
Metal Gearmotors, 20 CPR, 2.7-18V

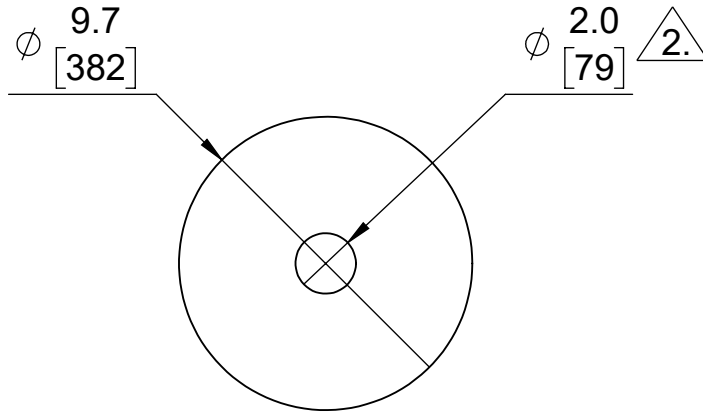
Item number:
3499

Drawing date:
4 January 2017

Units: mm
[mil]

PCB dev code:
enc04a

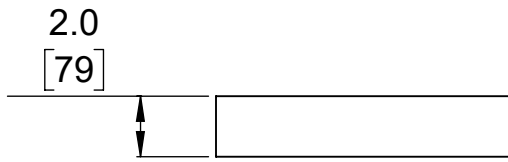

Robotics & Electronics
© 2016 Pololu Corporation



① Top view
Scale 4:1



② Isometric view
Scale 4:1



③ Profile
Scale 4:1



④ Actual size
Scale 1:1

1. To get the specified scale, select 100% in print settings.



Designed to fit extended motor shaft on Pololu 20D mm Metal Gearmotors

<https://www.pololu.com/product/3499>

Name:
Magnetic Encoder Pair Kit for 20D mm
Metal Gearmotors, 20 CPR, 2.7-18V

Item number:
3499

Drawing date:
6 January 2017

Units:
mm
[mil]

Dev code:
w1r02c


Robotics & Electronics
© 2016 Pololu Corporation