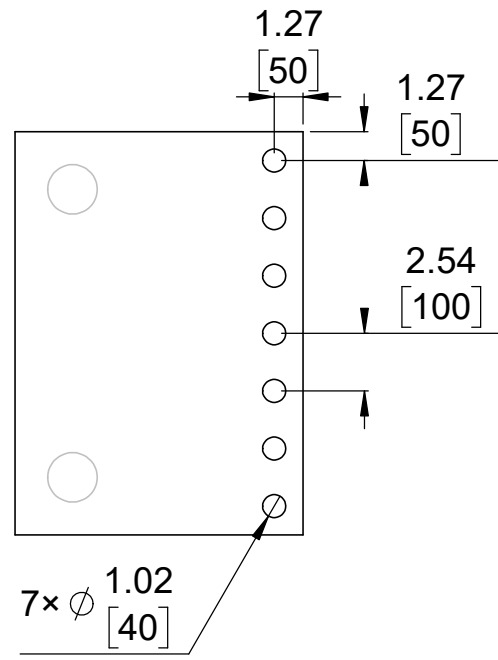
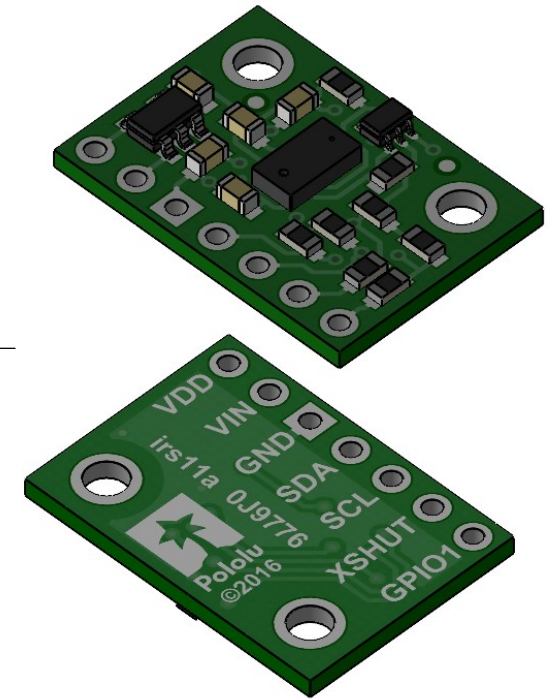


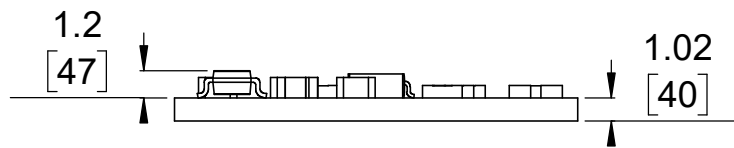
① Board dimensions (top view)
Scale 3:1



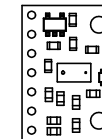
② Connector callouts (bottom view)
Scale 3:1



③ Isometric view
Scale 3:1



④ Profile
Scale 3:1



⑤ Actual size
Scale 1:1

- 1. Intended for #2 and M2 screws.
- 2. To get the specified scale, select 100% in print settings.
- 3. Drill location tolerance: ± 0.1 [± 5].
- 4. Board edge tolerance: ± 0.3 [± 10].

https://www.pololu.com/category/306	
Name: VL53L0X/VL53L1X/VL53L3CX/VL53L4CD Time-of-Flight Distance Sensor Carrier with Voltage Regulator	Item number: 2490, 3415, 3416, 3692
Drawing date: 30 July 2024	Dev code: irs11a
Units: mm [mil]	Material: mixed

