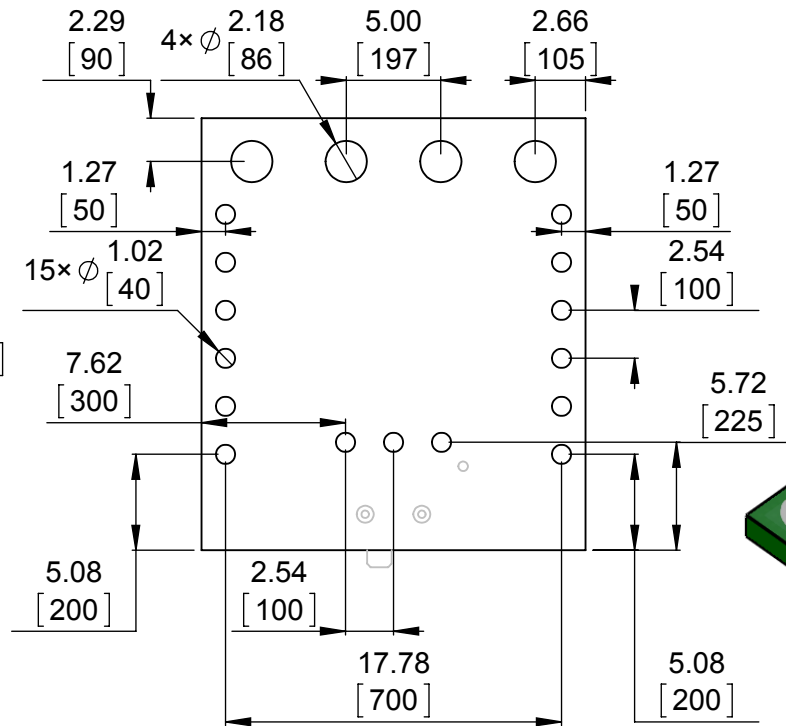
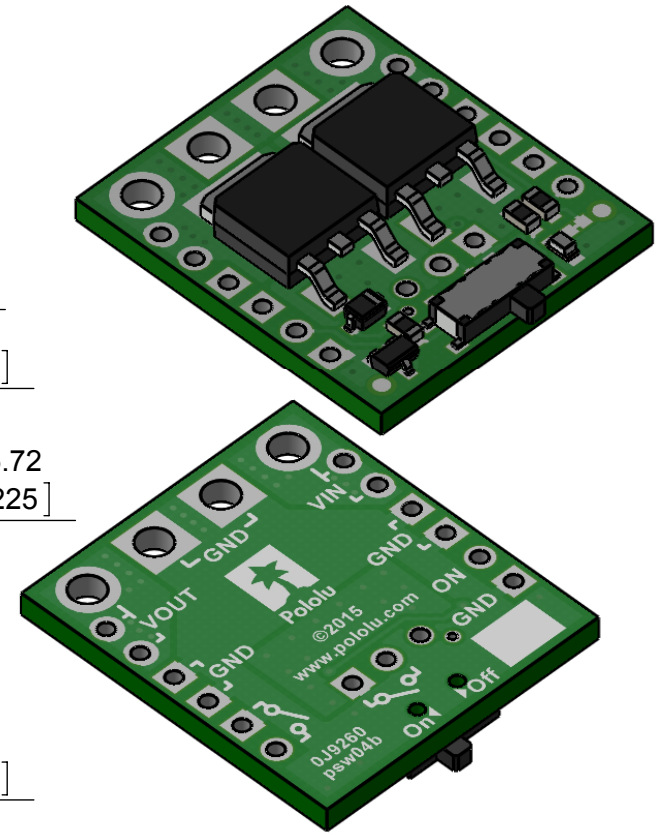


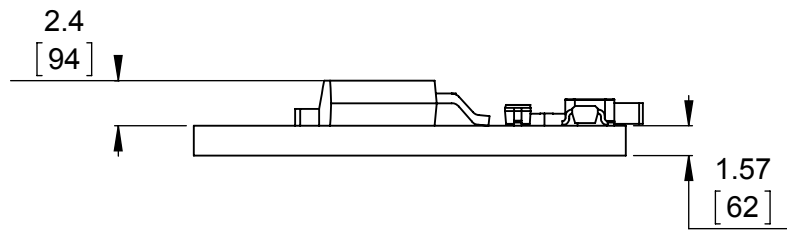
1 Board dimensions (top view)
Scale 5:2



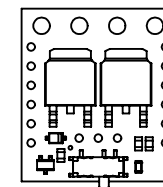
2 Connector callouts (bottom view)
Scale 5:2



3 Isometric view
Scale 5:2



4 Profile
Scale 5:2



5 Actual size
Scale 1:1

1. To get the specified scale, select 100% in print settings.
2. Drill location tolerance: ± 0.1 [± 5].
3. Board edge tolerance: ± 0.3 [± 10].

<https://www.pololu.com/product/2814>

Name:
Big MOSFET Slide Switch with
Reverse Voltage Protection

Item numbers:
2814, 2815

Drawing date:
14 January 2016

Units:
mm
[mil]

PCB dev code:
psw04b

Pololu
Robotics & Electronics
© 2016 Pololu Corporation