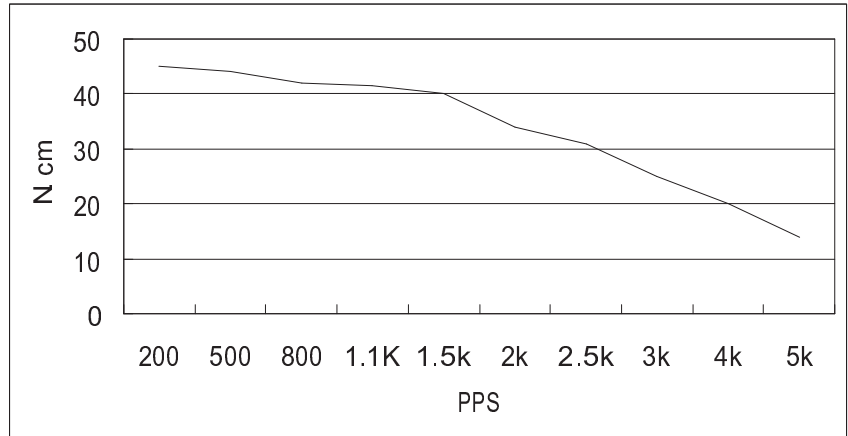


HIGH TORQUE HYBRID STEPPING MOTOR SPECIFICATIONS

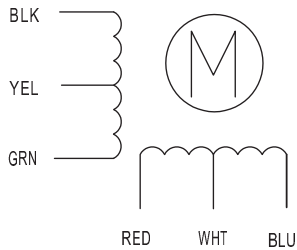
| General specifications | | Electrical specifications | |
|--------------------------|------------------------------------|---|------------|
| Step Angle (°) | 1.8 | Rated Voltage (V) | 4 |
| Temperature Rise (°C) | 80 Max (rated current, 2 phase on) | Rated Current (A) | 1.2 |
| Ambient temperature (°C) | -20~+50 | Resistance Per Phase ($\pm 10\% \Omega$) | 3.3 (25°C) |
| Number of Phase | 2 | Inductance Per Phase ($\pm 20\% \text{mH}$) | 2.8 |
| Insulation Resistance | 100M Ω , Min (500VDC) | Holding Torque (Kg.cm) | 3.17 |
| Insulation Class | Class B | Detent Torque (g.cm) | 200 |
| Max. radial force (N) | 28 (20mm from the flange) | Rotor Inertia (g.cm ²) | 68 |
| Max. axial force (N) | 10 | Weight (Kg) | 0.365 |

● Pull out torque curve:

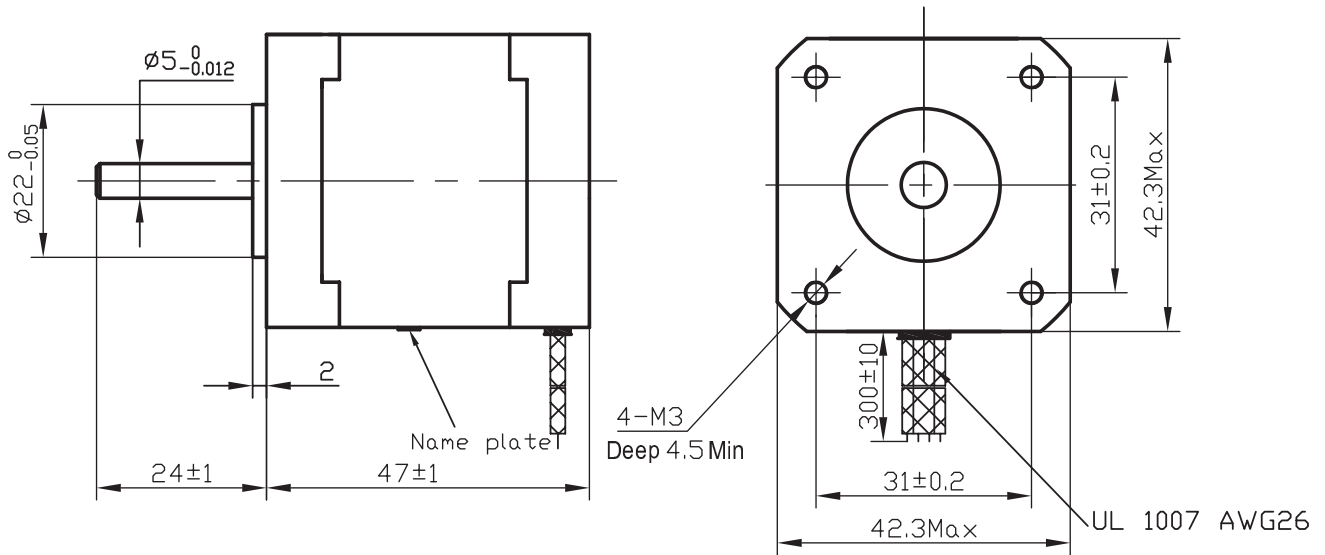
VOLTAGE: 24VDC, CONSTANT CURRENT: 1.2A, HALF STEP



● Wiring Diagram:



● Dimensions: (unit=mm)



| | | | | | | |
|---------|----------------|-------------|----|------|---|----------------------|
| | | | | | <h3>SY42STH47-1206A</h3> | TECHNICAL CONDITIONS |
| REV | REVISIONS | DESCRIPTION | BY | DATE | | |
| DRAW | 任飞飞 2010.06.29 | | | | CHANGZHOU SONGYANG MACHINERY & ELECTRONICS NEW TECHNIC INSTITUTE | <h2>060047000</h2> |
| CHECK | | | | | | |
| APPROVE | | | | | | |