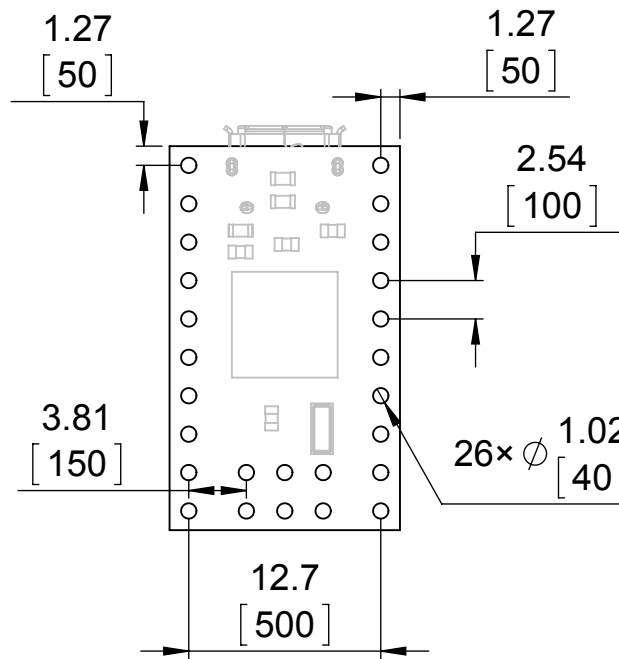
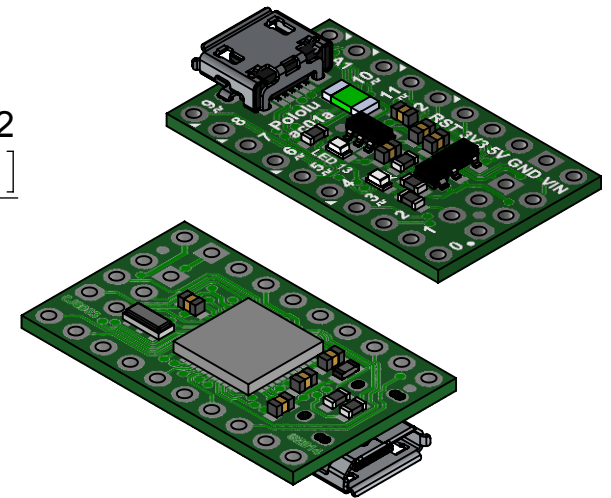


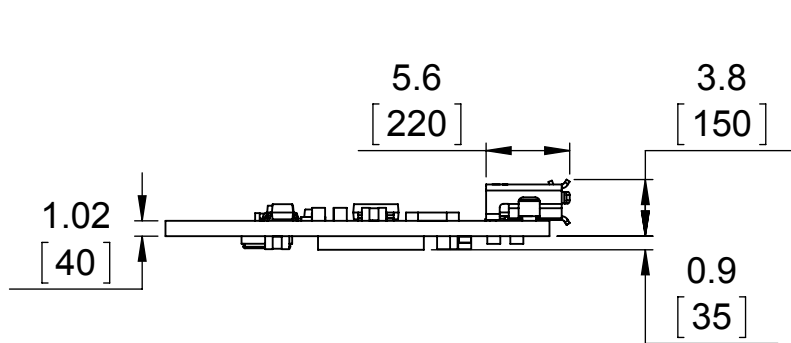
1 Board dimensions (top view)  
Scale 2:1



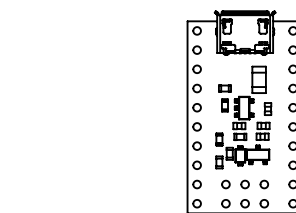
2 Connector callouts (bottom view)  
Scale 2:1



3 Isometric view  
Scale 2:1



4 Profile  
Scale 2:1



5 Actual size  
Scale 1:1

1. To get the specified scale, select 100% in print settings.
2. Drill location tolerance:  $\pm 0.1$  [ $\pm 5$ ].
3. Board edge tolerance:  $\pm 0.3$  [ $\pm 10$ ].

<http://www.pololu.com/product/3101>

Name: A-Star 32U4 Micro	Item number: 3101
Drawing date: 23 September 2014	
Units: mm [mil]	PCB dev code: ac01a
 © 2014 Pololu Corporation	