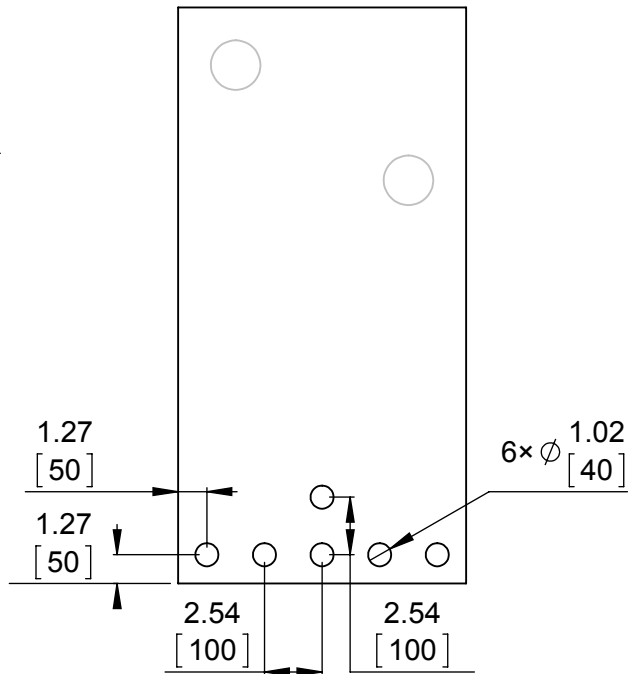
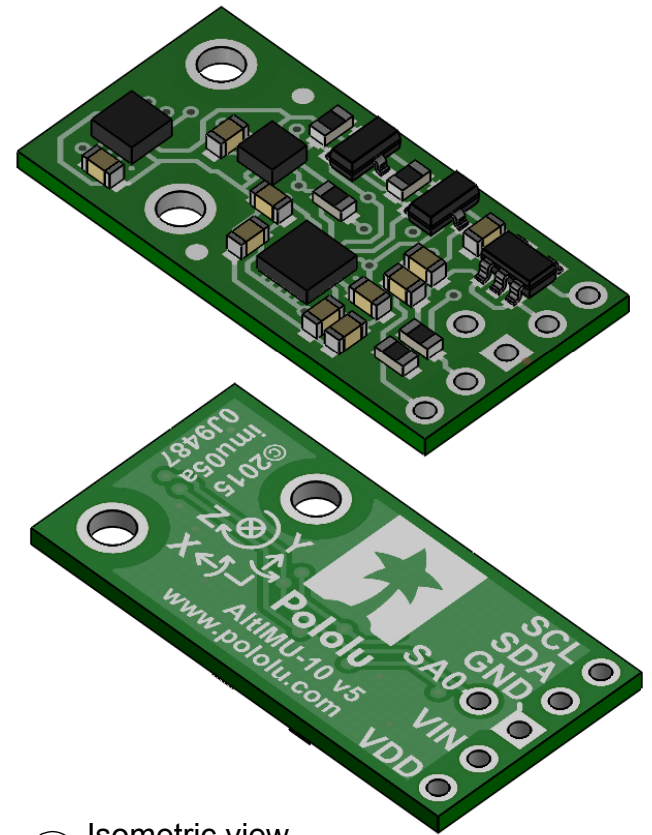


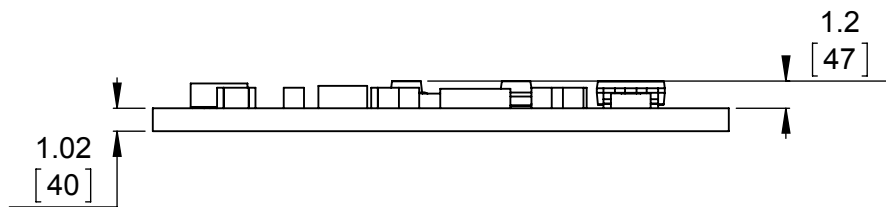
1 Board dimensions (top view)
Scale 3:1



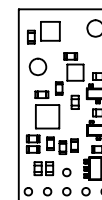
2 Connector callouts (bottom view)
Scale 3:1



3 Isometric view
Scale 3:1



4 Profile
Scale 3:1



5 Actual size
Scale 1:1

1. To get the specified scale, select 100% in print settings.
2. Drill location tolerance: ± 0.1 [± 5].
3. Board edge tolerance: ± 0.3 [± 10].

<https://www.pololu.com/product/2739>

Name:
AltIMU-10 v5 Gyro, Accelerometer, Compass, and
Altimeter (LSM6DS33, LIS3MDL, and LPS25H Carrier)

Item number:
2739

Drawing date:
21 January 2016

Units: mm
[mil]

PCB dev code:
imu05a

Pololu
Robotics & Electronics
© 2016 Pololu Corporation